



## **HUDSON BAY MINING AND SMELTING CO., LIMITED**

### **Paving Program**

Continuous improvements to the plant infrastructure include roadway maintenance and road construction activities. Dust control was identified as an item to be addressed as part of general improvements to the plant and roadway infrastructure. Recent paving projects as well as proposed pavement projects fit into plant wide dust control programs. Continued pavement of remaining unpaved plant areas are envisaged pending future budgetary approvals.

Refer to the marked up drawing PXD-0000.

#### **2007**

Improvements to the plant road ways included the main road from the machine shop past the mill. This pavement tied into the existing paved ore haul road and significantly reduced the dusting from the large ore haul trucks through this high traffic area. Included in this season's construction was the paving of the main-gate and health station area. This too is a high traffic area which improved dusting conditions by paving it.

#### **2009**

Several small high traffic areas near the Mill were paved during this construction season. The main paving program complete in 2009 was the section of the plant incorporating South bound Smelter traffic.

#### **2011**

Paving projects for the Concentrate loading and new Filter building area as well as main ore haul road improvements have been submitted as part of the 2011 capital budget.

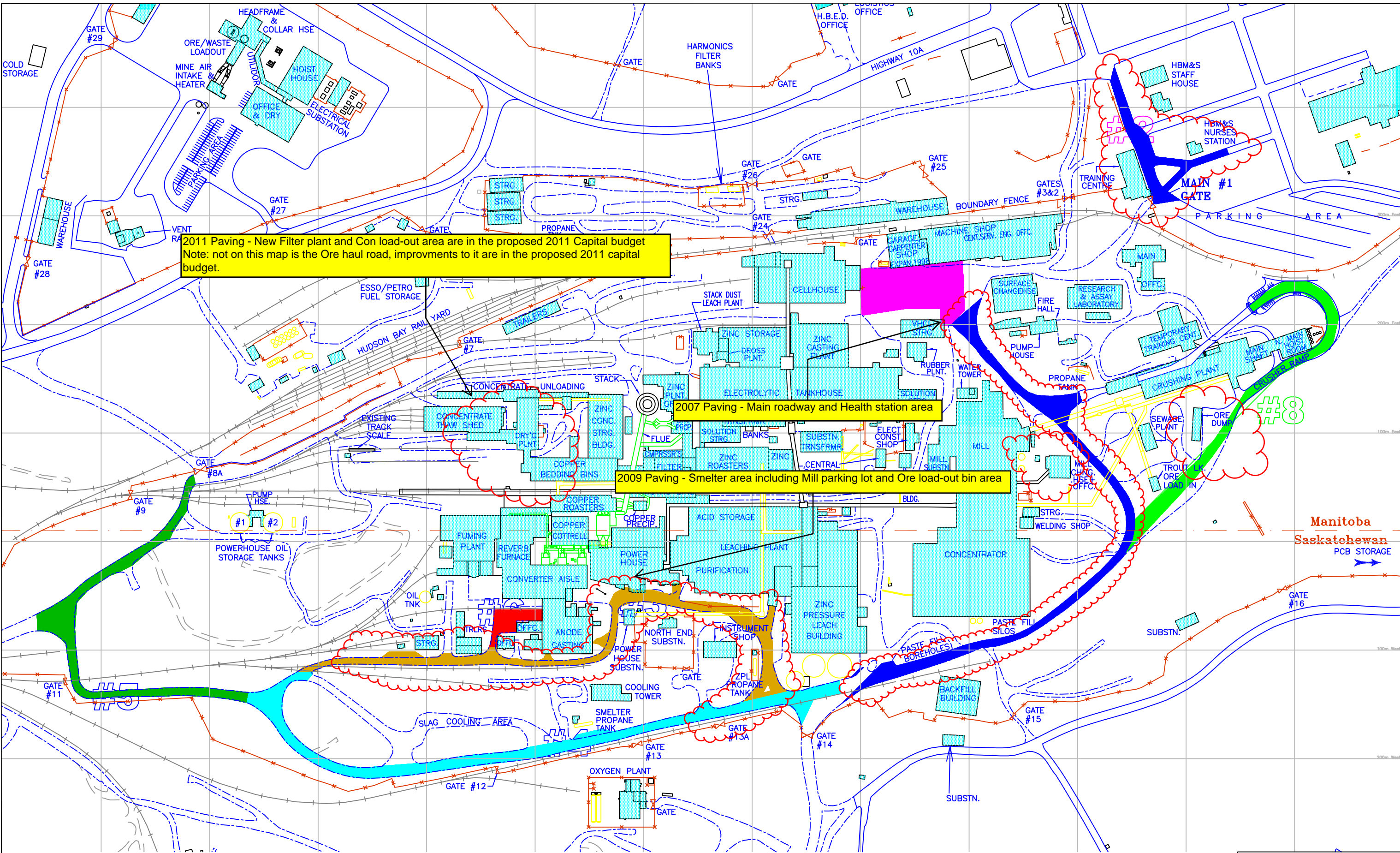
#### **2012 to closure**

It is envisaged that paving programs will continue to improve roadways and reduce dust conditions due to vehicular and equipment activities at the HBMS metallurgical complex. These long term projects are anticipated to continue in the upcoming years pending appropriate budgetary approvals.

**Hudson Bay Mining and Smelting Co., Limited**  
P.O. Box 1500 Flin Flon, Manitoba R8A 1N9 Canada



BMS is a wholly-owned subsidiary of HudBay Minerals Inc.



2011 Paving - New Filter plant and Con load-out area are in the proposed 2011 Capital budget  
 Note: not on this map is the Ore haul road, improvements to it are in the proposed 2011 capital budget.

2007 Paving - Main roadway and Health station area

2009 Paving - Smelter area including Mill parking lot and Ore load-out bin area

2007-68-002

REVISIONS	DATE	NAME	SIGNATURE	No.	MADE BY	DATE	APPR. BY	DESCRIPTION	DWG. No.	DESCRIPTION	DWG. No.	DESCRIPTION	DATE	SCALE	DWG. No.	REV.
														NTS	PXD-0000	0

DRAWN BY: J Harrower  
 DESIGNED BY: J Harrower  
 CHECKED BY:  
 APPROVED BY:

HUDSON BAY MINING & SMELTING CO., LIMITED

HBMS METALLURGICAL PLANT  
 2007 PAVING PLAN  
 SITE PLAN

SCALE: NTS  
 DWG. No. PXD-0000  
 REV. 0  
 CAD FILE: PXD-0000